



**ImageVision**

*Modular Consoles™*

[www.ImageVisionInc.com](http://www.ImageVisionInc.com)

**COMPLETE  
CONTROL ROOM  
SOLUTIONS**



**DESKS**



**WORKSTATIONS**



**PROCESS CONTROL  
CONSOLES**

|                           |                      |
|---------------------------|----------------------|
| <b>STEEL CONSTRUCTION</b> | Looks better LONGER  |
| <b>MODULAR</b>            | Future FLEXIBILITY   |
| <b>OPTIONAL GASKETING</b> | Keeps interior CLEAN |
| <b>CUSTOM COLORS</b>      | The extra touch      |

Laminated worksurface • Powder coat finish  
Drawers • Slide-out trays • Sub-panels • Equipment racks

**Customized to YOUR requirements!**

 **ImageVision**  
*Modular Consoles*

PO Box F  
La Grange, TX 78945  
FAX: (979) 247-4062  
[console@imagevisioninc.com](mailto:console@imagevisioninc.com)

**(888)664-6762**

- All Steel • Modular • Optional Gasketing •
- Tough Powder Coated Finish • Custom Finishes •



## POTATO PROCESSING PLANT

- Touchscreen monitors, no glass.
- Cut-outs for hardwired operators
- Cutouts and support shelves for video

## FIBERBOARD PLANT

- Custom color and laminate
- Gasketed to keep the resin dust out of the interior
- Angled wedge panel with cut-outs for hard wired



*“We use standard modular components, and customize each console to your needs.”*

*Dave Renfro, President*



## STEEL MILL

- Custom riser panel with cut-out for pushbuttons.
- Pushbuttons wired to subpanel in lower tier.
- Task light

## NATURAL GAS PIPELINE

- 2nd tier monitor housing for “overview” screen.

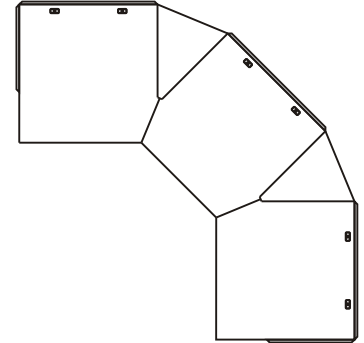


# Product Profile *ImageVision Consoles*

*Totally modular console system  
 Customizeable, reviseable, up-gradeable  
 Showroom quality look ... industrial strength feel*

**Base Console Features:**

- 14 gauge steel frame
- 16 gauge sheet metal, front, sides, rear
- Powder coat paint; many options avail
- 24, 30, 48, 60 inch standard widths
- Worksurface load tested to 500 lb.
- Hinged front access doors
- Liftoff panels, side and rear
- Ventilation slots or "Gasketed"
- File/storage drawers
- Pull-out CPU/Equipment trays
- Adjustable Leveling feet

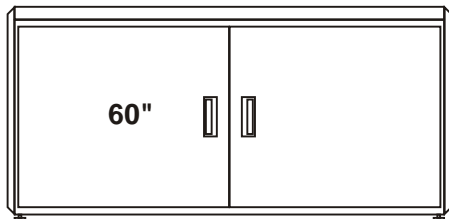
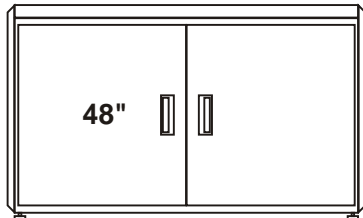
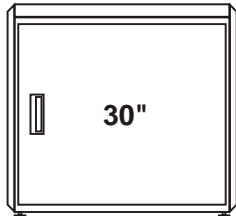
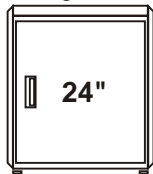


**PLAN VIEW SHOWING ANGLED SECTIONS**

**Monitor Tier Features:**

- One, two or three tier
- Task light
- Liftoff ventilated rear panels
- Angled viewing windows

**OPTIONAL STORAGE/FILE DRAWERS**



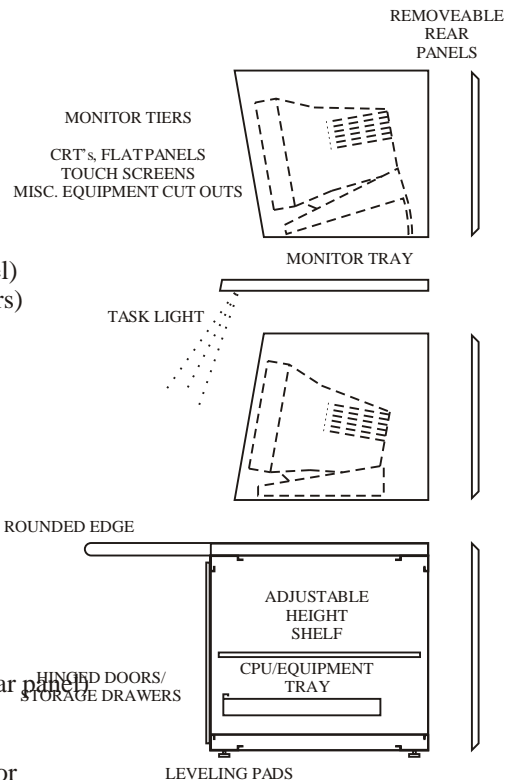
**Typical specifications:**

**Base**

- Depth - 48" (+ 1" for rear panel)
- Desktop height - 29" (+ levelers)
- Desktop thickness - 2.0"
- Desktop load rating - 500 lb.
- Frame load rating - 3,000 lb.
- Frame - 14 ga. steel
- Panels - 16 ga. steel
- Widths - 24, 30, 48, 60 inch
- Access
  - Front - hinged door
  - Rear - liftoff panel

**Monitor tier modules**

- Height - 23.25"
- Depth - 23" to 27" (+ 1" for rear panel)
- Widths - 24, 30, 48, 60 inch
- Access
  - Front - flip up, retractable door
  - Rear - liftoff panel
- Task light thickness - 1.5"



# Product Features

## ImageVision Consoles

- Retractable monitor access doors
- Glare resistant optically coated glass
- Tough 2" bull nose laminated work surface rated 500 lbs!
- Mouse & keyboard cable grommets
- Removable front panels with custom cutouts for control devices



- Lockable front or rear doors standard
- Monitor trays include tilt adjustments



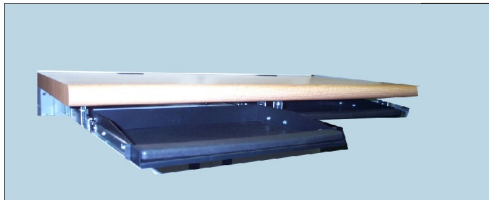
- Pull out CPU trays
- Lift off panels at rear & ends
- Standard hole pattern for sub panels & adjustable shelves
- Adjustable height leveling pads

# Accessories

# ImageVision Consoles

Matching Tables, Credenzas, Bookcases, Document Organizers,  
Numerous Styles of Drawer Units, etc., etc.  
Chairs, Flat Panel Displays & Industrial CRT's

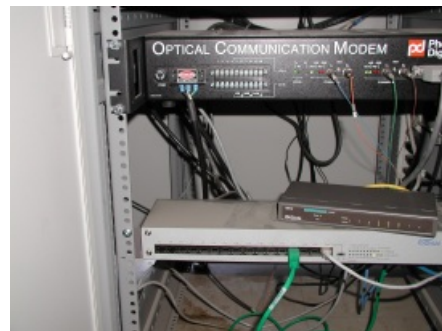
- Tables in both standard & custom dimensions
- Tough 2" bull nose laminated work surfaces; just like our consoles
- Monitor risers, bookshelves &



- Keyboard drawers
- Articulating keyboard/mouse trays
- Swing arms for industrial CRT's & flat panel displays
- Flat panel displays & industrial CRT's



- Drawer modules
- EIA Racks - all sizes
- Equipment Sub Panels



- Beveled side & back privacy panels match our consoles
- Cable management available
- Adjustable leveling feet

LowBoy  
Console



## **Our Customers Include:**

**ARAMCO**  
**Albemarle, Corp.**  
**Alco Chemical**  
**Anheuser Busch Company**  
**Appleton Papers, Inc.**  
**Augusta Service Company**  
**Basic American Foods**  
**Borden Chemical**  
**Cardinal Glass Industries**  
**Caterpillar, Inc.**  
**ChemTech**  
**CHI Engineering**  
**CII Carbon, LLP**  
**City of Johnson City, TN**  
**City of Lynchburg, VA**  
**Corning, Inc.**  
**Colonial Pipeline Company**  
**Daiken America, Inc.**  
**ElectroDesign Engineering**  
**Equistar Chemicals, LP**  
**FFE Minerals USA, Inc.**  
**Fairfield Industries, Inc.**  
**Formosa Plastics Company**  
**Fort James Paper**  
**General Mills, Inc.**  
**Georgia Pacific Corp.**  
**Grain Processing Corp.**  
**Groveton Paperboard**  
**Hercules, Inc.**  
**Honeywell**  
**Humbolt Wedag, Inc.**  
**Industrial Network Systems**  
**Inland Steel Industries**  
**Integrated Process Systems**  
**International Paper**  
**Kraft Foods, Inc.**  
**Lynch Systems**  
**McBurney Corporation**  
**Max Control Systems, Inc.**  
**Naval Surface Warfare Center**  
**New Energy Corporation**  
**Noramco, Inc.**  
**Northwest Natural Gas**  
**Optimization Technology, Inc.**  
**PCS Phosphate, Inc.**  
**Petrotech, Inc.**  
**Powell Electrical Manufacturing**  
**Process Solutions, Inc.**  
**Puffer-Sweiven, Inc.**  
**Shell Oil**  
**Seibert Powder Coatings, Inc.**  
**Solvay Polymers, Inc.**  
**Sterling Chemicals**  
**SuperBox Recycling**  
**Texas Tech University**  
**The Automation Group**  
**TurboCare, Inc.**  
**Weyerhaeuser Company**  
**Yokogawa Electric Corp.**

***And Growing!***

**(888)664-6762**

## **CONTACT INFORMATION**

Mail: *ImageVision, Inc.*

PO Box F  
1644 Hausmann Gin Road  
La Grange, TX 78945

Dave Renfro, President

Email: [daverenfro@imagevisioninc.com](mailto:daverenfro@imagevisioninc.com)

Bill Tielsch, CAD Designer/Inside Sales

Email: [billtielsch@imagevisioninc.com](mailto:billtielsch@imagevisioninc.com)

Phone: (888) 664-6762; if no answer, forwards to our Davenport, IA office  
(979) 247-4068  
FAX (979) 247-4062

Visit our Website for Modular Consoles at:  
[www.imagevisioninc.com](http://www.imagevisioninc.com)

Or

Mail: **Grace Engineered Products, Inc.**

5000 Tremont Ave. Suite 203  
Davenport, IA 52807



Phone: Toll Free at (800) 280-9517  
(319) 386-9596  
FAX (319) 386-9639

Visit our Website for Programming Ports & Interface Products at:  
[www.grace-eng.com](http://www.grace-eng.com)

|                               |         |  |
|-------------------------------|---------|--|
| Phil Allen, President         | Ext. 11 | <a href="mailto:philallen@grace-eng.com">philallen@grace-eng.com</a> |
| Tom Howard, Sales Manager     | Ext. 15 | <a href="mailto:tfhoward@grace-eng.com">tfhoward@grace-eng.com</a>   |
| Troy Ryner, Inside Sales      | Ext. 16 | <a href="mailto:troyr@grace-eng.com">troyr@grace-eng.com</a>         |
| Anita Holst, Inside Sales     | Ext. 10 | <a href="mailto:anitah@grace-eng.com">anitah@grace-eng.com</a>       |
| Mark Gutheil, Design Engineer | Ext. 12 | <a href="mailto:markg@grace-eng.com">markg@grace-eng.com</a>         |
| Corliss Tuttle, Production    | Ext. 10 | <a href="mailto:corlisst@grace-eng.com">corlisst@grace-eng.com</a>   |

(888)664-6762