



IMAGEVISION MODULAR CONSOLES

"RECEIVING INSTRUCTIONS" & "ASSEMBLY INSTRUCTIONS" .PDF FILES ARE AVAILABLE
ON "DOWNLOADS" TAB AT IMAGEVISIONINC.COM

ASSEMBLY TOOLS REQUIRED

1. (1) 10mm OPEN END WRENCH (WORK SURFACE DRAW BOLTS)
2. (2) 7/16" COMBINATION WRENCHES
3. (2) 9/16" WRENCHES
4. (1) 1/2" WRENCH
5. (2) 3/8" WRENCHES
6. SLOTTED SCREW DRIVER (FOR ALIGNING HOLES)
7. DRILL WITH PHILLIPS DRIVER BIT
8. PHILLIPS SCREW DRIVER
9. POCKET KNIFE
10. LEVEL

REVIEW "RECEIVING INSTRUCTIONS" & REMOVE CONSOLE UNITS FROM PALLETS

IF YOU EXPERIENCE DIFFICULTY DURING ASSEMBLY, CONTACT:

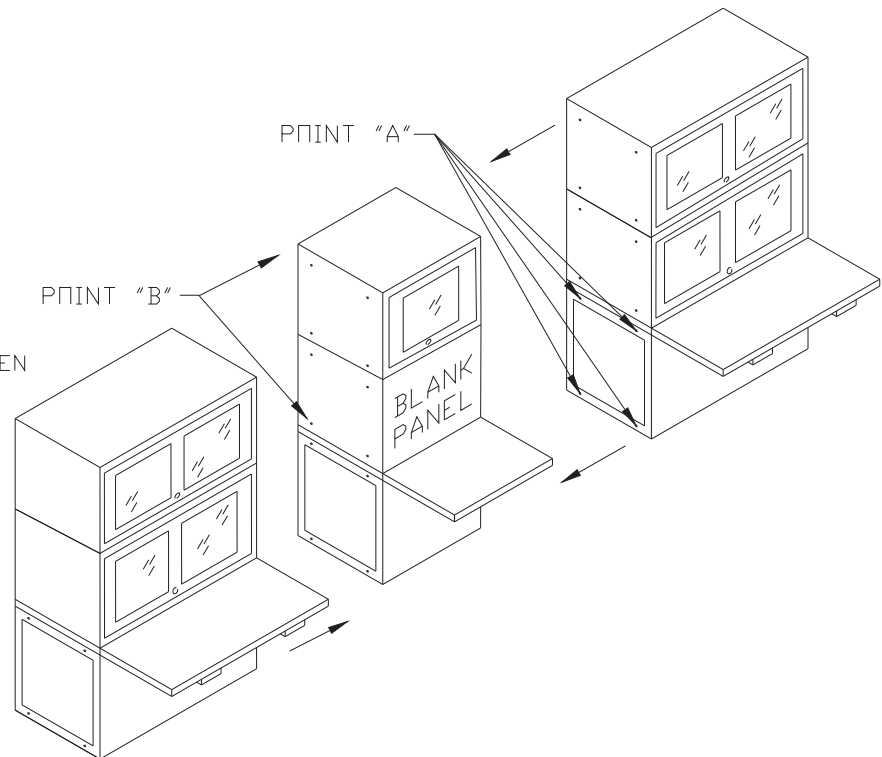
IMAGEVISION, INC.
888-664-6762

IMAGEVISION, INC. Modular Consoles PO Box F La Grange, TX 78945 (888) 664-6762 (979) 247-4068 Fax: (979) 247-4062 http://www.ImageVisionInc.com	DWG. SCALE: 1 in - 48 in	TITLE: IMAGEVISION ABLEVIEW ASSEMBLY INSTRUCTIONS
	DATE: 02/21/03 BY: DAR	
	PAGE NO. 1 OF 7	DRAWING NUMBER: IVLG AbleVIEW Tools REVISION: D

STEPS FOR ASSEMBLING MULTIPLE CONSOLE UNITS:

1. TRIM PUT HARDWARE SLOTS ON ADJACENT WORK SURFACES.
SEE DETAIL "C" ON SHEET 3 INSTRUCTIONS.
2. SLIDE ALL CABINETS TOGETHER TIGHTLY. INSTRUCTIONS FOR
FOR INSTALLING OPTIONAL WEDGES ARE FOUND ON SHEET 4.
3. ADJUST LEVELERS ON FLOOR TO LEVEL ALL CABINETS
4. USING #10-32 BOLTS SUPPLIED LOOSELY FASTEN BASE FRAMES
TOGETHER AT (4) POINTS SHOWN AT POINT "A"
5. LOOSELY BOLT MONITOR HOUSINGS TOGETHER AT DETAIL "B"
6. BOLT WORKSURFACES FOLLOWING INSTRUCTIONS ON SHEET 3.
7. RECHECK LEVEL AND TIGHTEN WORKSURFACE BOLTS FIRST, THEN TIGHTEN
ALL CABINET BOLTS BEGINNING AT THE CENTER OF THE ASSEMBLY AND
WORKING OUTWARD.

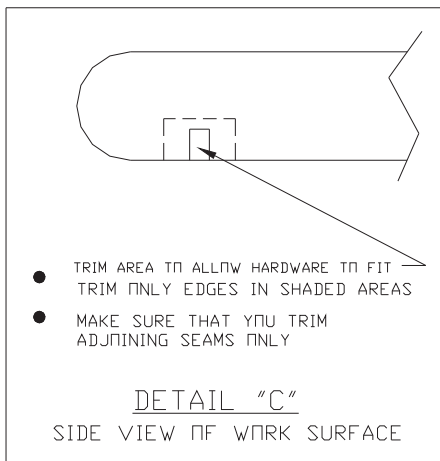
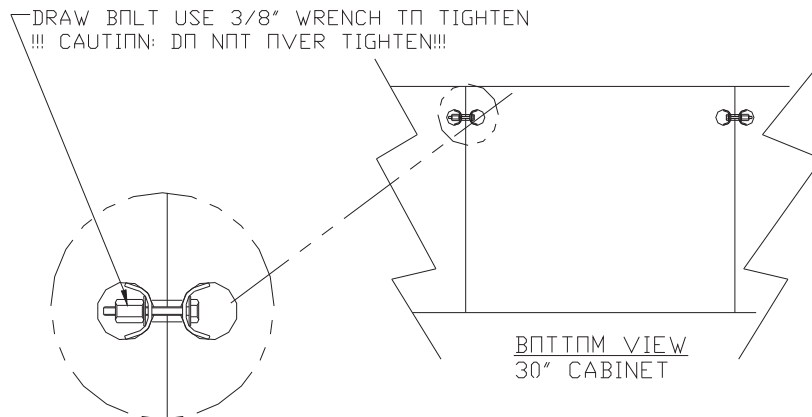
***NOTE-- ALL BOLTS ARE INSERTED FROM INSIDE CABINETS.
REAR PANELS MAY BE REMOVED FOR EASIER ASSEMBLY.



CAUTION: DO NOT TIGHTEN ANY BOLTS UNTIL ALL UNITS ARE
LEVELED AND ALL BOLTS ARE IN PLACE.

IMAGEVISION, INC. Modular Consoles PO Box F La Grange, TX 78945 (888) 664-6762 (979) 247-4068 Fax: (979) 247-4062 http://www.ImageVisionInc.com	DWG. SCALE: 1 in - 48 in	TITLE: IMAGEVISION ABLEVIEW BASE UNIT & MONITOR HOUSING ASSEMBLY INSTRUCTIONS
	DATE: 02/21/03 BY: DAR	
	PAGE NO. 2 OF 7	DRAWING NUMBER: IVLG AbleVIEW Assy Steps REVISION: D

WORK SURFACE PREP & ASSEMBLY



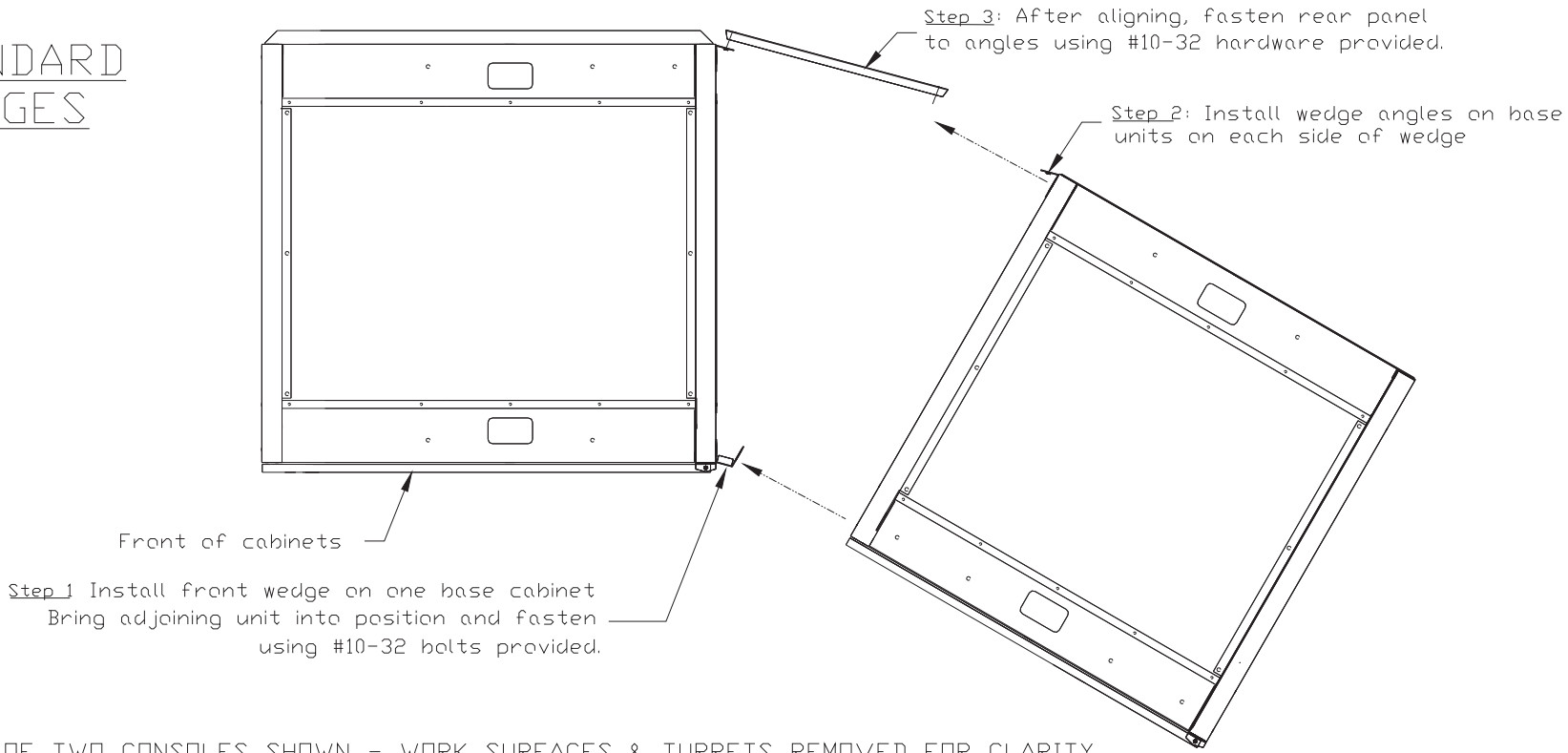
- TRIM AREA TO ALLOW HARDWARE TO FIT
TRIM ONLY EDGES IN SHADED AREAS
- MAKE SURE THAT YOU TRIM
ADJOINING SEAMS ONLY

NOTES:

1. DO NOT TIGHTEN BOLTS UNTIL ALL COMPONENTS ARE BOLTED TOGETHER.
2. LINE UP AND TIGHTEN ALL WORK SURFACE BEFORE TIGHTENING ANY CABINET BOLTS.
3. START TO TIGHTEN BOLTS IN THE CENTER OF THE ASSEMBLY AND WORK TOWARD EACH END.
4. DO NOT FORGET TO TRIM OUT WORK SURFACES AS SHOWN IN DETAIL "C"

IMAGEVISION, INC. Modular Consoles PO Box F La Grange, TX 78945 (888) 664-6762 (979) 247-4068 Fax: (979) 247-4062 http://www.ImageVisionInc.com	DWG. SCALE: 1 in - 48 in	TITLE: IMAGEVISION ABLEVIEW WORK SURFACE PREP & ASSEMBLY INSTRUCTIONS
	DATE: 02/21/03 BY: DAR	
	PAGE NO. 3 OF 7	DRAWING NUMBER: TVLG AbleVIEW Work Surfaces REVISION: D

STANDARD
WEDGES



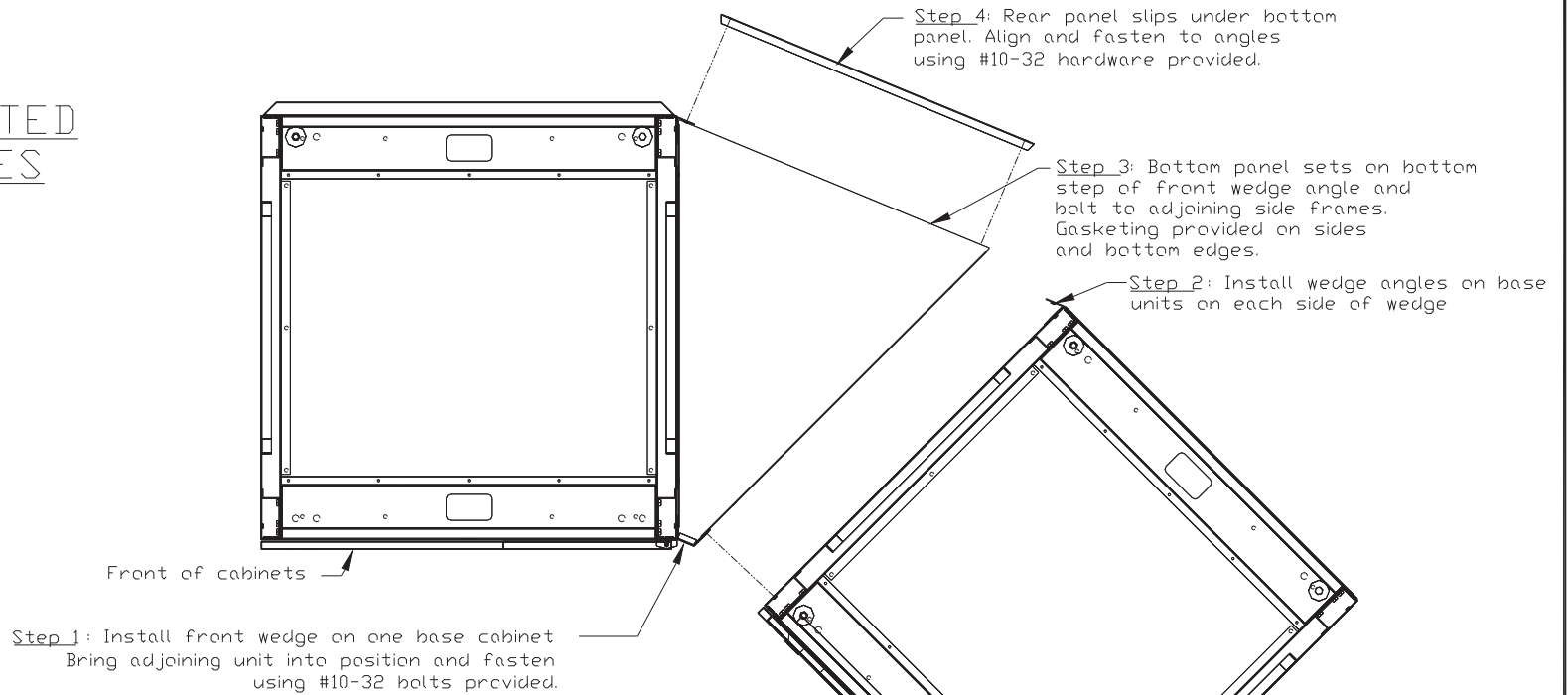
NOTES:

PLAN VIEW OF TWO CONSOLES SHOWN - WORK SURFACES & TURRETS REMOVED FOR CLARITY

1. ALIGN AND LEVEL ALL UNITS BEFORE INSTALLING HARDWARE.
2. COMPLETE HARDWARE INSTALLATION IN FRONT WEDGE BEFORE DOING REAR WEDGE ASSEMBLY. HARDWARE FOR FRONT WEDGE INSTALLS FROM INSIDE WEDGE AREA INTO CAPTIVE NUTS IN SIDE PANELS OF ADJOINING BASES.
3. REAR PANEL HARDWARE INSTALLS FROM REAR OF CABINET INTO CAPTIVE NUTS IN REAR ANGLES.
4. SLITS PERMIT MINOR IN AND OUT ADJUSTMENT FOR THE MOST PLEASING ALIGNMENT.

IMAGEVISION, INC. Modular Consoles PO Box F La Grange, TX 78945 (888) 664-6762 (979) 247-4068 Fax: (979) 247-4062 http://www.ImageVisionInc.com	DWG. SCALE: 1 in - 48 in	TITLE: IMAGEVISION ABLEVIEW STANDARD WEDGE ASSEMBLY INSTRUCTIONS
	DATE: 02/21/03 BY: DAR	DRAWING NUMBER: IVLG AbleVIEW Wedges_STD REVISION: D
	PAGE NO. 4 OF 7	

GASKETED
WEDGES



NOTES:

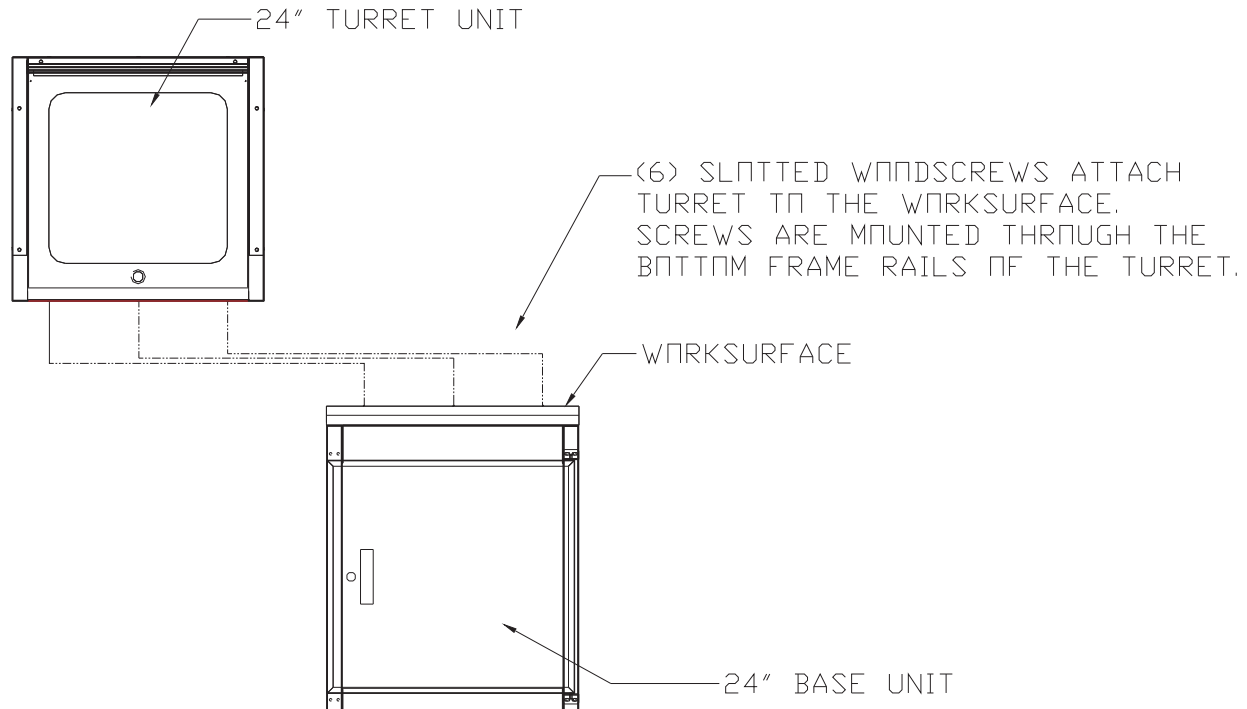
PLAN VIEW OF TWO CONSOLES SHOWN. WORK SURFACES & TURRETS REMOVED FOR CLARITY.

1. ALIGN AND LEVEL ALL UNITS BEFORE INSTALLING HARDWARE.
2. COMPLETE HARDWARE INSTALLATION IN FRONT WEDGE BEFORE DOING REAR WEDGE ASSEMBLY. HARDWARE FOR FRONT WEDGE INSTALLS FROM INSIDE WEDGE AREA INTO CAPTIVE NUTS IN SIDE PANELS OF ADJOINING BASES.
3. REAR PANEL HARDWARE INSTALLS FROM REAR OF CABINET INTO CAPTIVE NUTS IN REAR ANGLES.
4. SLITS PERMIT MINOR IN AND OUT ADJUSTMENT FOR THE MOST PLEASING ALIGNMENT.

IMAGEVISION, INC. Modular Consoles PO Box F La Grange, TX 78945 (888) 664-6762 (979) 247-4068 Fax: (979) 247-4062 http://www.ImageVisionInc.com	DWG. SCALE: 1 in - 48 in	TITLE: IMAGEVISION ABLEVIEW GASKETED WEDGE ASSEMBLY INSTRUCTIONS
	DATE: 08/15/03 BY: DAR	DRAWING NUMBER: AbleVIEW Wedges_GASKETED REVISION: D
	PAGE NO. 5 OF 7	

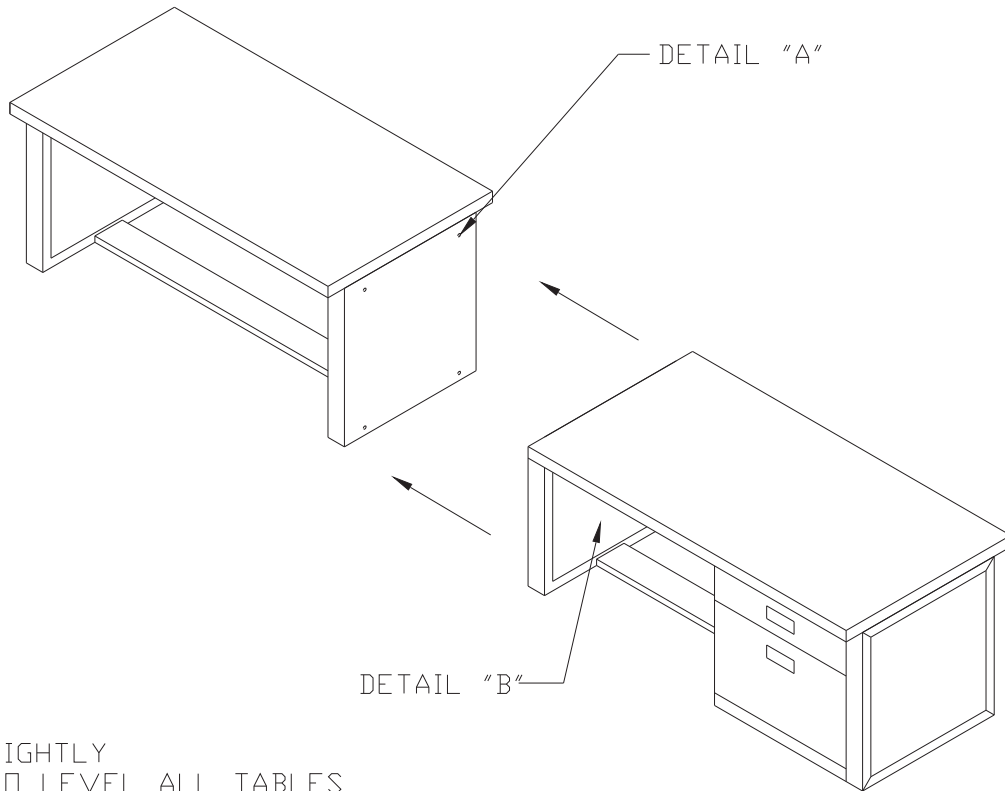
INSTRUCTIONS FOR CARRYING TIERED CONSOLES THROUGH NARROW DOORWAYS

NOTE: TO CARRY 1-TIER OR 2-TIER UNITS THRU 30" DOORWAYS, THE MONITOR HOUSINGS MUST BE REMOVED FIRST. THEN TURN BASE UNITS AND MONITOR HOUSINGS ON THEIR BACKS TO DOLLY OR CARRY THROUGH THE DOOR PER THE INSTRUCTIONS BELOW:



<p>IMAGEVISION, INC. Modular Consoles PO Box F La Grange, TX 78945 (888) 664-6762 (979) 247-4068 Fax: (979) 247-4062 http://www.ImageVisionInc.com</p>	DWG. SCALE: 1 in - 48 in	TITLE: IMAGEVISION ABLEVIEW TURRET REMOVAL & ASSEMBLY INSTRUCTIONS
	DATE: 08/15/03 BY: DAR	
	PAGE NO. 6 OF 7	DRAWING NUMBER: AbleVIEW Narrow Doorway REVISION: D

TABLE
ASSEMBLY



NOTES:

1. SLIDE ALL TABLES TOGETHER TIGHTLY
2. ADJUST LEVELERS ON FLOOR TO LEVEL ALL TABLES
3. USING 1/4" BOLTS SUPPLIED BOLT BASE TABLE FRAMES TOGETHER AT (4) POINTS SHOWN AT DETAIL "A"
4. INTERNAL PANEL MUST BE REMOVED TO BOLT TOGETHER TABLES AT DETAIL "B"

IMAGEVISION, INC. Modular Consoles PO Box F La Grange, TX 78945 (888) 664-6762 (979) 247-4068 Fax: (979) 247-4062 http://www.ImageVisionInc.com	DWG. SCALE: 1 in - 48 in	TITLE: IMAGEVISION ABLEVIEW TABLE & DESK ASSEMBLY INSTRUCTIONS
	DATE: 08/15/03 BY: DAR	
	PAGE NO. 7 OF 7	DRAWING NUMBER: AbleVIEW Tables & Desks REVISION: D